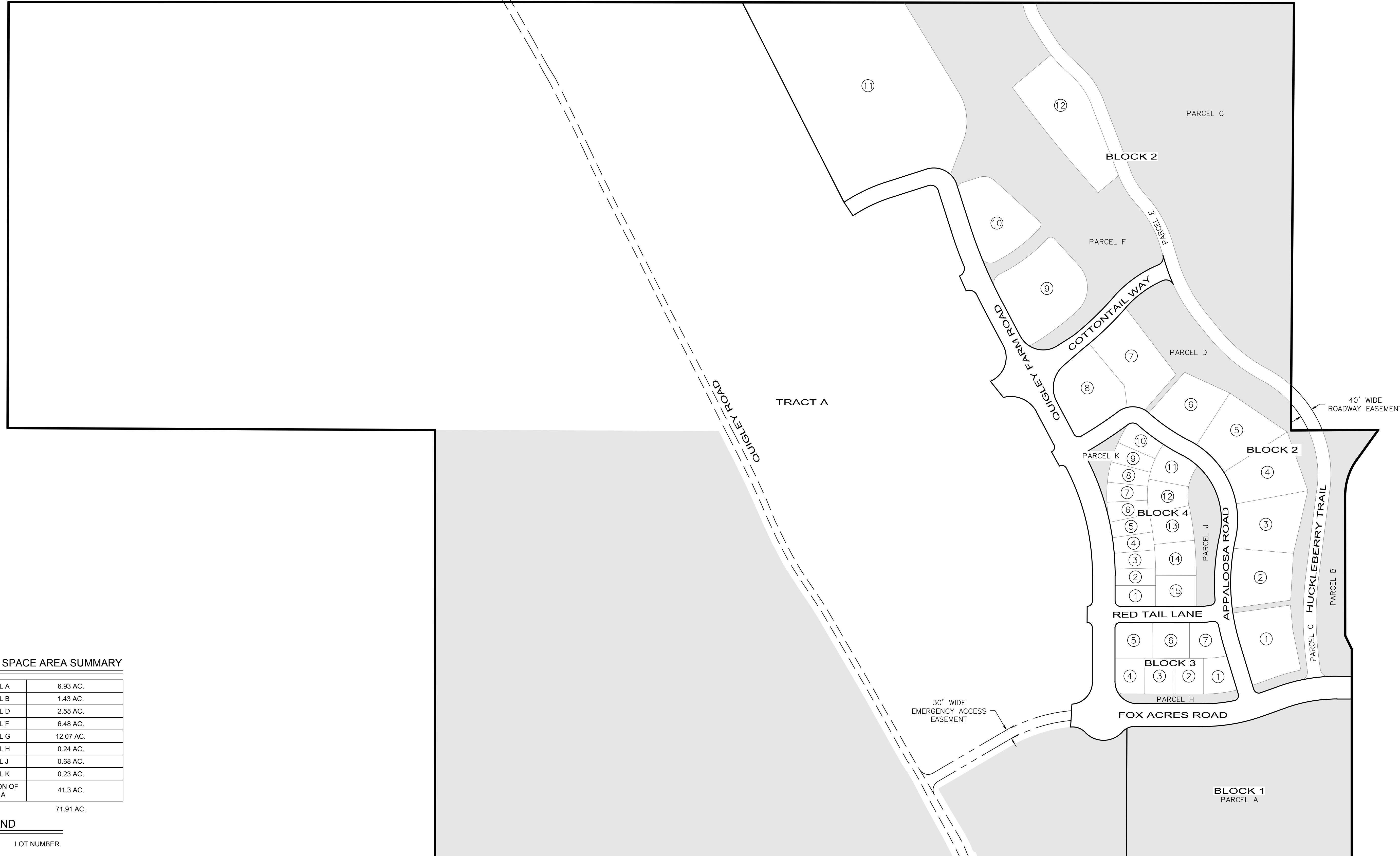


QUIGLEY FARM P.U.D.

LOCATED WITHIN: T2N, R18E, SECTION 10, BLAINE COUNTY, IDAHO.
WHEREIN TAXLOT 8368 IS SUBDIVIDED CREATING 4 BLOCKS AND TRACT A.

FEBRUARY 2016
PRELIMINARY PLAT




NOT TO SCALE



OPEN SPACE AREA SUMMARY

PARCEL A	6.93 AC.
PARCEL B	1.43 AC.
PARCEL D	2.55 AC.
PARCEL F	6.48 AC.
PARCEL G	12.07 AC.
PARCEL H	0.24 AC.
PARCEL J	0.68 AC.
PARCEL K	0.23 AC.
PORTION OF TRACT A	41.3 AC.
TOTAL	71.91 AC.

LEGEND

-  LOT NUMBER
-  OPEN SPACE

PREPARED BY: BENCHMARK ASSOCIATES, P.A.
P.O. BOX 733 - 100 BELL DRIVE, KETCHUM, IDAHO, 83340
PHONE (208)726-9512 FAX (208)726-9514 EMAIL: mail@bma5b.com
WEB: http://benchmark-associates.com/
Copyright © 2016 by Benchmark Associates.

REVISIONS	
No.	DESCRIPTION
A	ADDED OPEN SPACE AREA SUMMARY



PREPARED BY:
BENCHMARK ASSOCIATES, P.A.
P.O. BOX 733 100 BELL DRIVE
KETCHUM, IDAHO 83340
(208) 726-9512
FAX 726-9514
WEB: WWW.BMA5B.COM
MAIL: WWW.BMA5B.COM

PRELIMINARY PLAT
QUIGLEY FARM P.U.D.
T2N, R18E, SEC 10, B.M., BLAINE COUNTY, IDAHO
PREPARED FOR: HENNESSY COMPANY

DRAWN BY: CMM
DESIGNED BY: CMM
CHECKED BY: CMM
DATE: 02/19/16
PROJECT NO.: 15222

SHEET NUMBER
P-0

P.U.D. SUBMITTAL 02/19/16