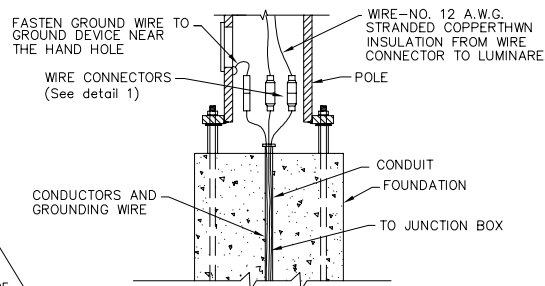
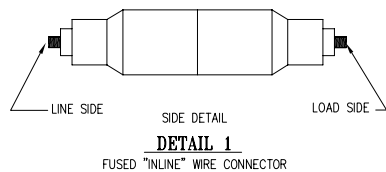


NOTE:
 Non-fused wire connectors required on neutral of 120 volt to ground circuits.
 Non fusible link required on grounding conductors of all breakaway installations.
 Fused wire connectors required on 120 & 240 volt phase to phase to ground circuits.



- NOTES:**
1. The foundation shall be located as indicated on the project plan sheets.
 2. All conduits, elbows and couplings within and protruding from the foundation, shall be Rigid Steel. The remaining conduits shall be as shown on the plans.
 3. Stubsouts shall be terminated with a Steel Bonded Bushing.
 4. Ground in accordance with N.E.C.
 5. Conduit shall be installed in such a manner as to not cause modification of the cabinet.
 6. Grade to provide drainage away from cabinet foundation.
 7. Service pedestal equipment shall be submitted and approved by the City Engineer.

REVISIONS

**2006 CITY OF HAILEY
 IMPROVEMENT STANDARD
 DRAWINGS**

**LIGHT POLE &
 PEDESTAL DETAILS**

911

DWG. NO.