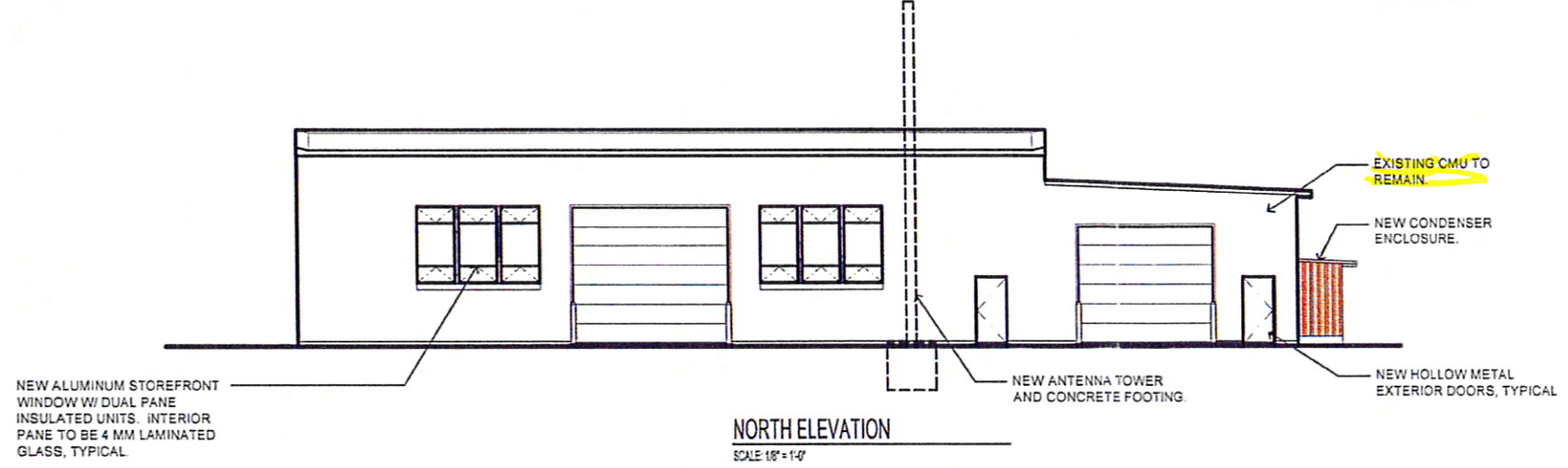
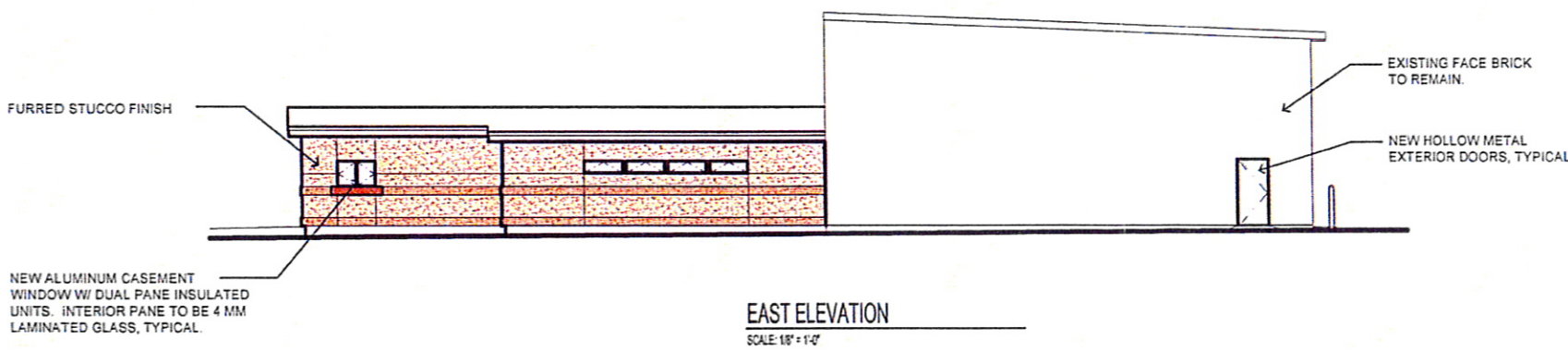


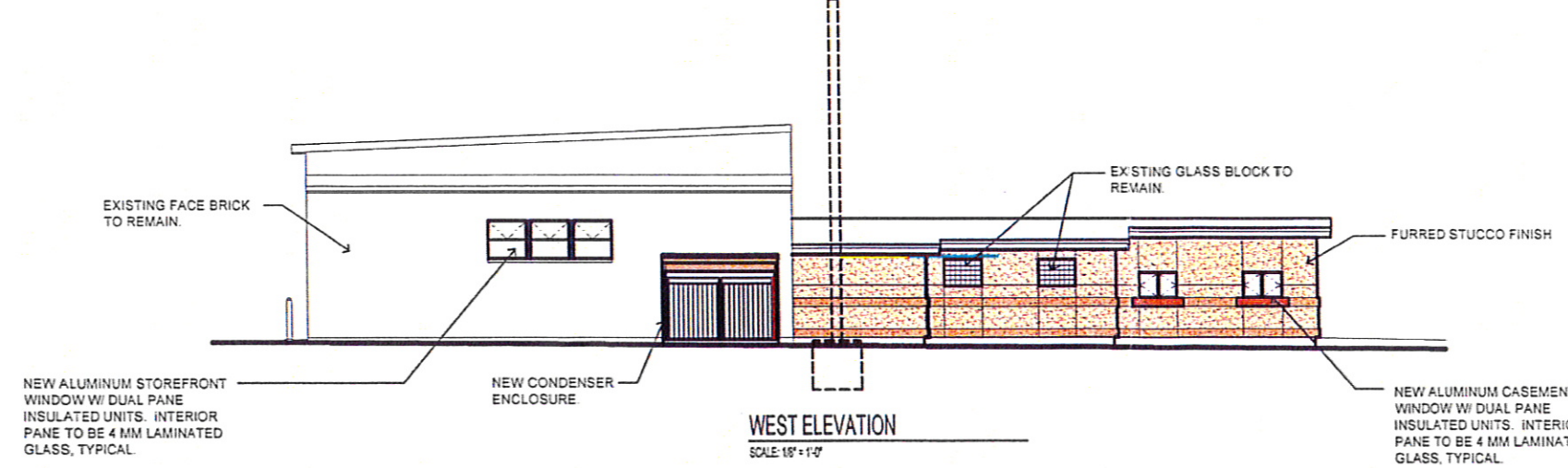
**SOUTH ELEVATION**  
SCALE: 1/8" = 1'-0"



**NORTH ELEVATION**  
SCALE: 1/8" = 1'-0"



**EAST ELEVATION**  
SCALE: 1/8" = 1'-0"



**WEST ELEVATION**  
SCALE: 1/8" = 1'-0"

*Original approval*

REVISIONS	BY:



**Architects and Planners, Chartered**  
565 W. Myrtle Street, Suite 225 Boise, Idaho 83702-7006

**IDAHO ARMY NATIONAL GUARD  
HAILEY R.C. RENOVATION  
HAILEY, IDAHO**

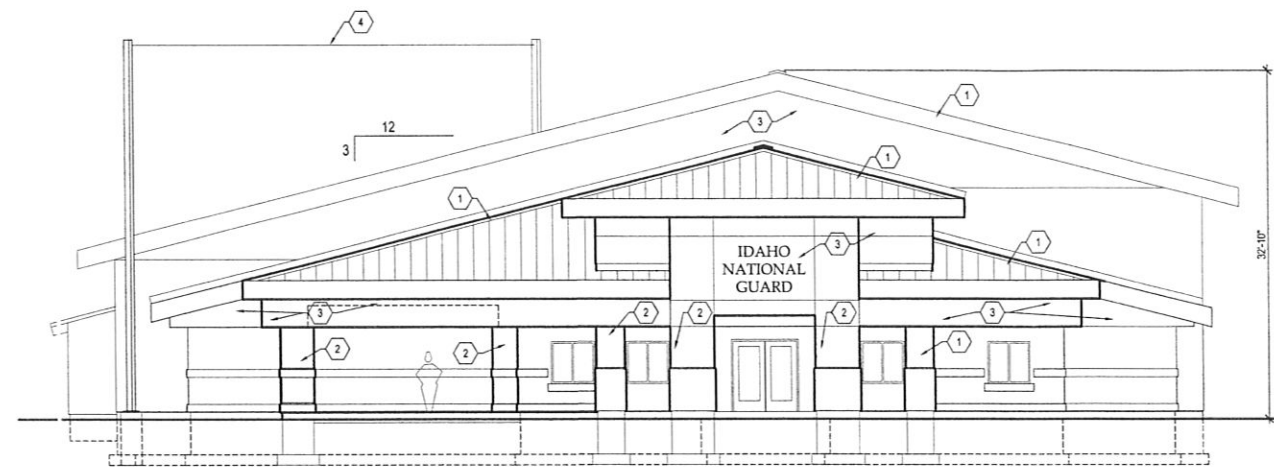
RECEIVED  
OCT 06 2008

DATE	MAY 23, 2008
SCALE	AS SHOWN
DRAWN BY:	EDF
PROJECT NO.	0731.00
SHEET	<b>A31</b>
BUILDING ELEVATIONS	

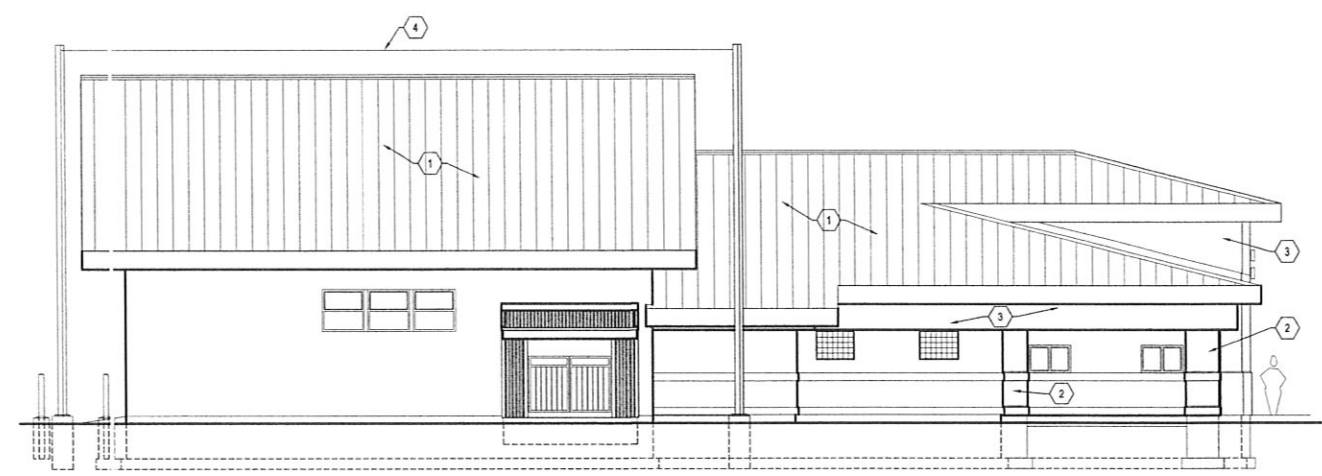
**SHEET KEYNOTES**

1. NEW RETROFIT ROOF ASSEMBLY, PREFINISHED METAL ROOF.
2. NEW COLUMN / PILASTER.
3. NEW STUCCO FINISH OVER SHEATHING AND FRAMING.
4. REPOSITIONED ANTENNA ARRAY AND POLES.

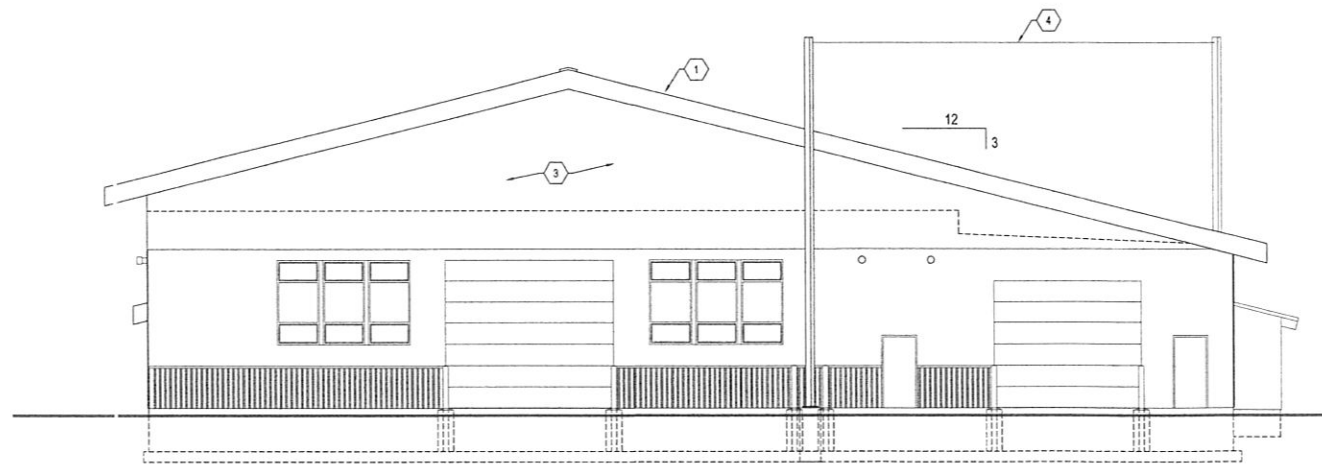
REVISIONS	BY:



**C2 SOUTH ELEVATION**  
SCALE: 1/8" = 1'-0"



**B2 WEST ELEVATION**  
SCALE: 1/8" = 1'-0"



**A2 NORTH ELEVATION**  
SCALE: 1/8" = 1'-0"



**SCA.**  
Architects and Planners, Chartered  
565 W. Myrtle Street, Suite 225 Boise, Idaho 83702-7606

DPW PROJECT NO. 08-336  
**HAILEY READINESS CENTER REROOF**  
DIVISION OF MILITARY  
311 CEDAR ST. EAST, HAILEY, IDAHO

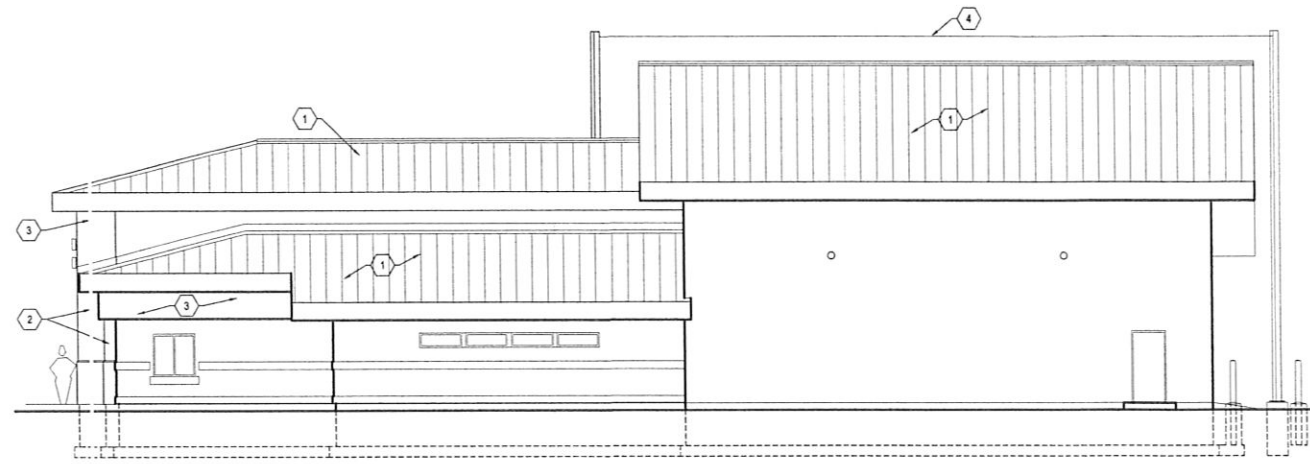
DATE:	SEPTEMBER 2009
SCALE:	AS SHOWN
DRAWN BY:	LF
PROJECT NO.:	0731.01
SHEET:	A-201 ELEVATIONS

**DESIGN DEVELOPMENT**

SHEET KEYNOTES

1. NEW RETROFIT ROOF ASSEMBLY, PREFINISHED METAL ROOF.
2. NEW COLUMN / PILASTER.
3. NEW STUCCO FINISH OVER SHEATHING AND FRAMING.
4. REPOSITIONED ANTENNA ARRAY AND POLES.

REVISIONS	BY:



C2 EAST ELEVATION  
SCALE: 1/8" = 1'-0"



**SPA.**  
Architects and Planners, Chartered  
563 W. Myrtle Street, Suite 225 Boise, Idaho 83702-7686

DPW PROJECT NO. 08-336  
HAILEY READINESS CENTER REROOF  
DIVISION OF MILITARY  
311 CEDAR ST. EAST, HAILEY, IDAHO

DATE: SEPTEMBER 2009  
SCALE: AS SHOWN  
DRAWN BY: LF  
PROJECT NO: 0731.01

SHEET  
**A-202**  
ELEVATIONS

DESIGN DEVELOPMENT