

PARKING REQUIREMENTS / NO. OF SPACES

1st LEVEL: TOTAL SQ. FT. = 8828.76 sq. ft.
 RETAIL: 6847.26 sq. ft. = 7 SPACES
 RESTAURANT: 1981.50 sq. ft. = 4 SPACES

2nd LEVEL: TOTAL SQ. FT. = 10,333.26 sq. ft.
 OFFICE: 10,333.26 sq. ft. = 21 SPACES

3rd LEVEL: TOTAL SQ. FT. = 7431.12 sq. ft.
 RESIDENCE: 1161.50 sq. ft. = 1 SPACE
 OFFICE: 6269.62 sq. ft. = 13 SPACES

EXISTING WAREHOUSE PARKING = 2 SPACES

TOTAL REQUIRED PARKING SPACES = 48 SPACES

TOTAL ON SITE PARKING SPACES = 48 SPACES

SNOW STORAGE REQUIREMENTS

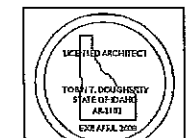
PARKING AREA / PATIO AREA = 13,000.00 sq. ft.
 TOTAL SQ. FT. = 13,000.00 sq. ft.

13,000.00 SQ. FT. X .25% = 3,250.00 SQ. FT. OF AREA

PATIO AREAS = 1,150 SQ. FT.
 EMPTY LOT AREA = 2,100 SQ. FT.
 TOTAL = 3,250.00 SQ. FT. OF AREA

TOBIN ARCHITECTS PA
 OFFICE OF ARCHITECTURE
 PLANNING AND DESIGN

TOBIN T DOUGHERTY
 ARCHITECT AIA
 SUN VALLEY ID OFFICE
 371 WALNUT AVE NORTH
 SUITE A
 P.O. BOX 14001-303
 KEYCHUM, ID, 83340
 PH 208.726-8112
 FX 208.726-9763



REGISTERED ARCHITECT
 TOBIN T. DOUGHERTY
 STATE OF IDAHO
 No. 14113
 07/15/2009

The Village
 AT HAILEY CENTER
 CORNER OF PINE AND RIVER STREET HAILEY, ID

CONSULTANTS:

ISSUE DATE: July 20, 2007
 PREVIOUS DATE: SEPT 28, 2007
 REVISION DATE: OCT 12, 2007
 DATE REVISED/PURCH: JUNE 1, 2009
 REVISION LOG:

▲	SEPT 29, 2007
▲	OCT 1, 2007
▲	
▲	

RECEIVED
 JUL 17 2008

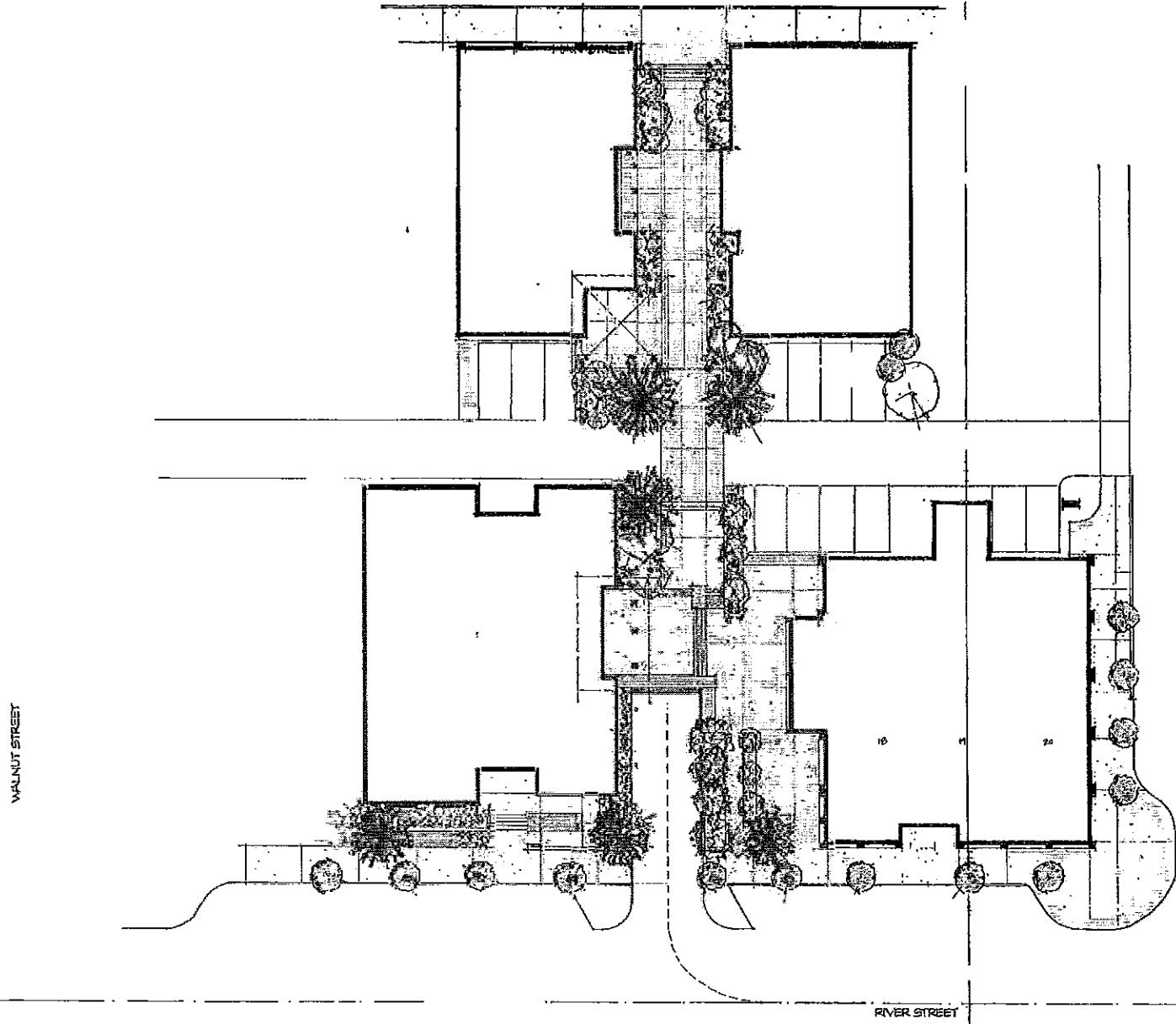


GENERAL NOTES

- REFER TO CIVIL DRAWINGS FOR PROPERTY BOUNDRIES, ALL UTILITIES AND RAMP AND STAIR DEFINITIONS.
- REFER TO LANDSCAPE PLAN (A1.3) AND LANDSCAPE DETAILS (A1.4).

PROJECT:	04/09/21/009
DRAWING:	TOL/15/101
PROJECT NUMBER:	2008-05
SCALE:	AS SHOWN OTHERWISE

A1.1



WALNUT STREET

PINE STREET

RIVER STREET

AREA DEVELOPEMENT PLAN
The Village at Hailey Center

PLAN SCALE 1/8" = 1'-0"

EXHIBIT A

TOBIN
ARCHITECTS PA
 OFFICE OF ARCHITECTURE
 PLANNING
 AND DESIGN
 A PROFESSIONAL
 ASSOCIATION
 SUN VALLEY OFFICE
 371 WALNUT AVE NORTH
 SUITE A
 RD. BOX 1001 MS
 KETCHUM, ID. 83134
 PH 208-726-8112
 FX 208-726-9100
 PALO ALTO, CA OFFICE
 PH 650-323-1890