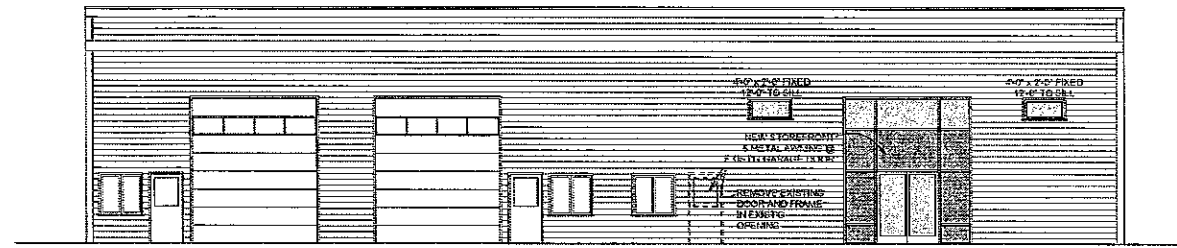


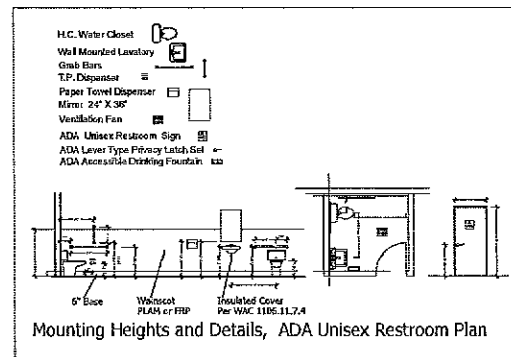
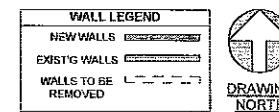
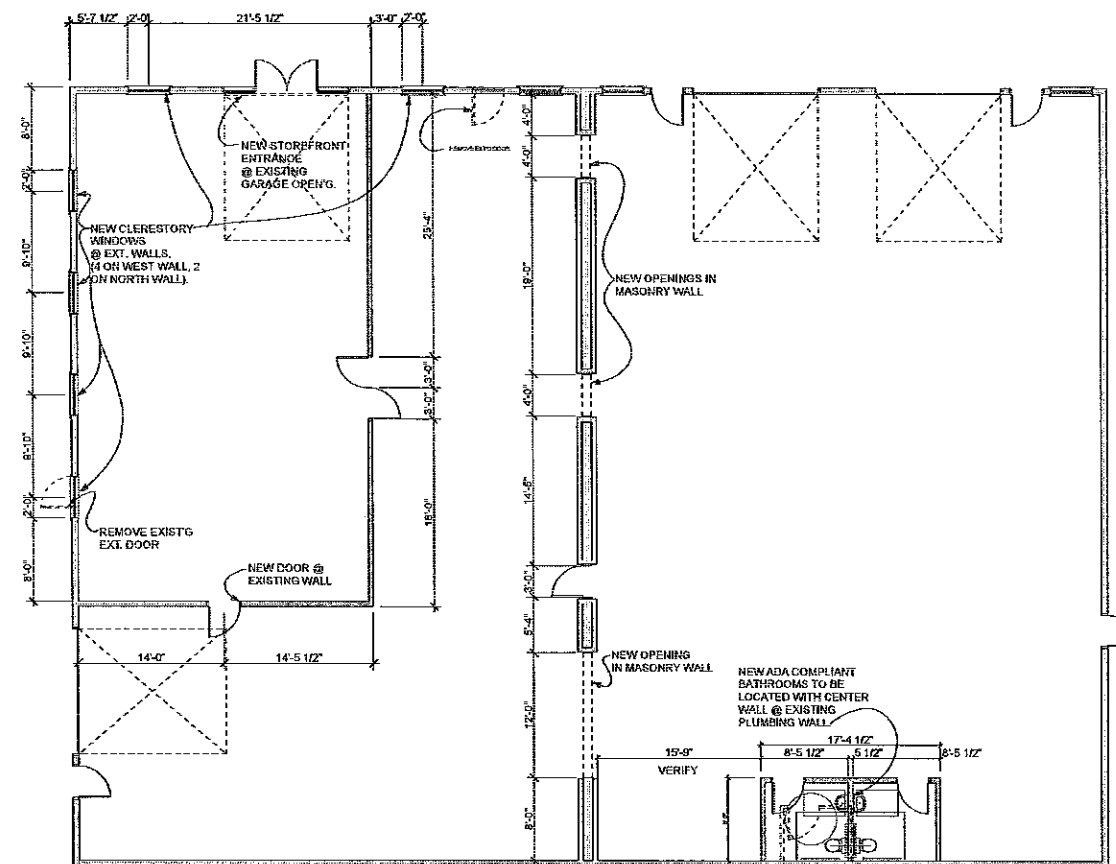
WEST EXTERIOR ELEVATION @ PLATT ELECTRIC

SCALE: 1/8"=1'-0"



NORTH EXTERIOR ELEVATION @ PLATT ELECTRIC

SCALE: 1/8"=1'-0"



REMODELED FLOOR PLAN @ PLATT ELECTRIC

SCALE: 1/8"=1'-0"

Revisions:

ANDREW K. BICK INC.
 p.o. box 6608 Ketchum, IDAHO 83340
 208.726.8608 phone 208.726-8065 fax
 atkbick@mindspring.com

A REMODEL FOR:
PLATT ELECTRIC SUPPLY
 3990 WOODSIDE BOULEVARD, HAILEY, IDAHO

DRAWING DATE:
 9-2-2009
 PRINT DATE:

SHEET:

3.0