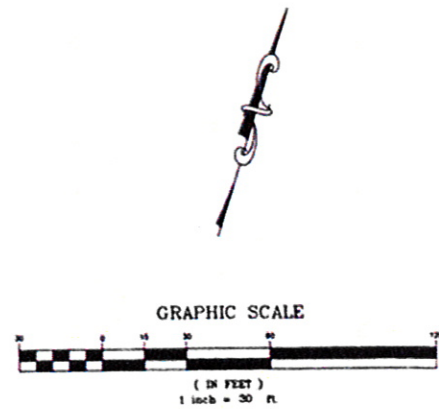


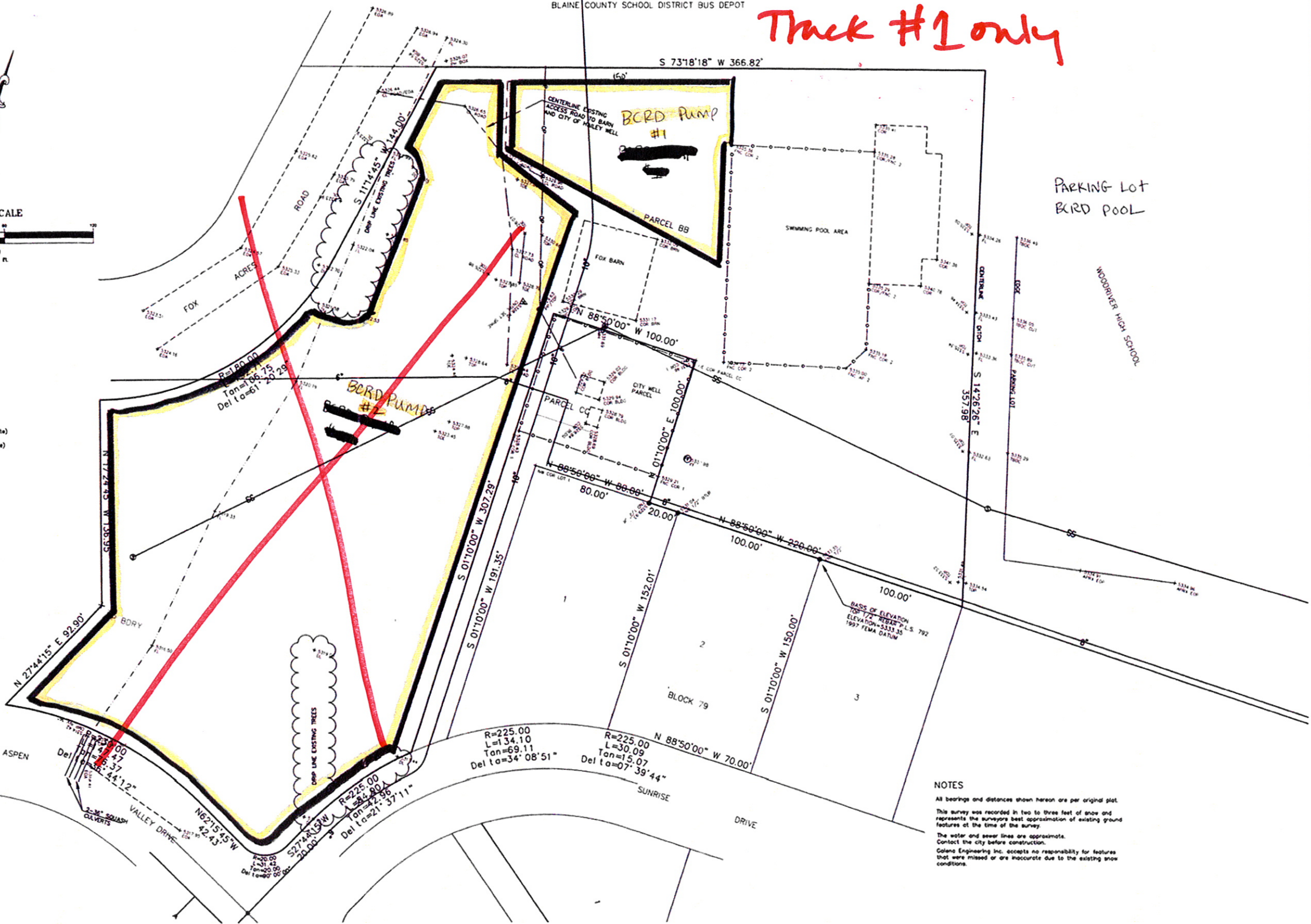
BLAINE COUNTY SCHOOL DISTRICT BUS DEPOT

Track #1 only



LEGEND

- 1/2" rebar
- △ set control point
- ⊙ sewer manhole
- ⊙ fire hydrant
- overhead power line
- power pole
- chain link fence
- edge of asphalt
- water line (approximate)
- sewer line (approximate)



NOTES

All bearings and distances shown hereon are per original plat.

This survey was recorded in two to three feet of snow and represents the surveyors best approximation of existing ground features at the time of the survey.

The water and sewer lines are approximate. Contact the city before construction.

Galena Engineering Inc. accepts no responsibility for features that were missed or are inaccurate due to the existing snow conditions.

NO	DATE	BY	APPR	REVISIONS

Galena Engineering Inc.
 Civil Engineers & Land Surveyors
 680 Second Avenue North
 P.O. Box 455
 Ketchum, Idaho 83340
 (208) 728-4729
 (208) 728-4783 fax
 email galena@micron.net

REUSE OF DRAWINGS
 These drawings, or any portion thereof, shall not be used on any Project or extensions of this Project except by agreement in writing with Galena Engineering, Inc.

Approved By _____
 DESIGNED BY _____ DATE 2/5/98
 DRAWN BY _____ DATE _____
 CHECKED BY _____ DATE _____

SITE MAP SHOWING
PARCEL BB, WOODSIDE PLAT NO. 21
 LOCATED IN SECTION 15, T. 2 N., R. 18 E., B.M., CITY OF HAILEY, BLAINE COUNTY, IDAHO
 PREPARED FOR BLAINE COUNTY RECREATION DISTRICT

ACAD DRAWING siteplan.dwg 3-2-98 1:02:58 pm

SHT 1 OF 1