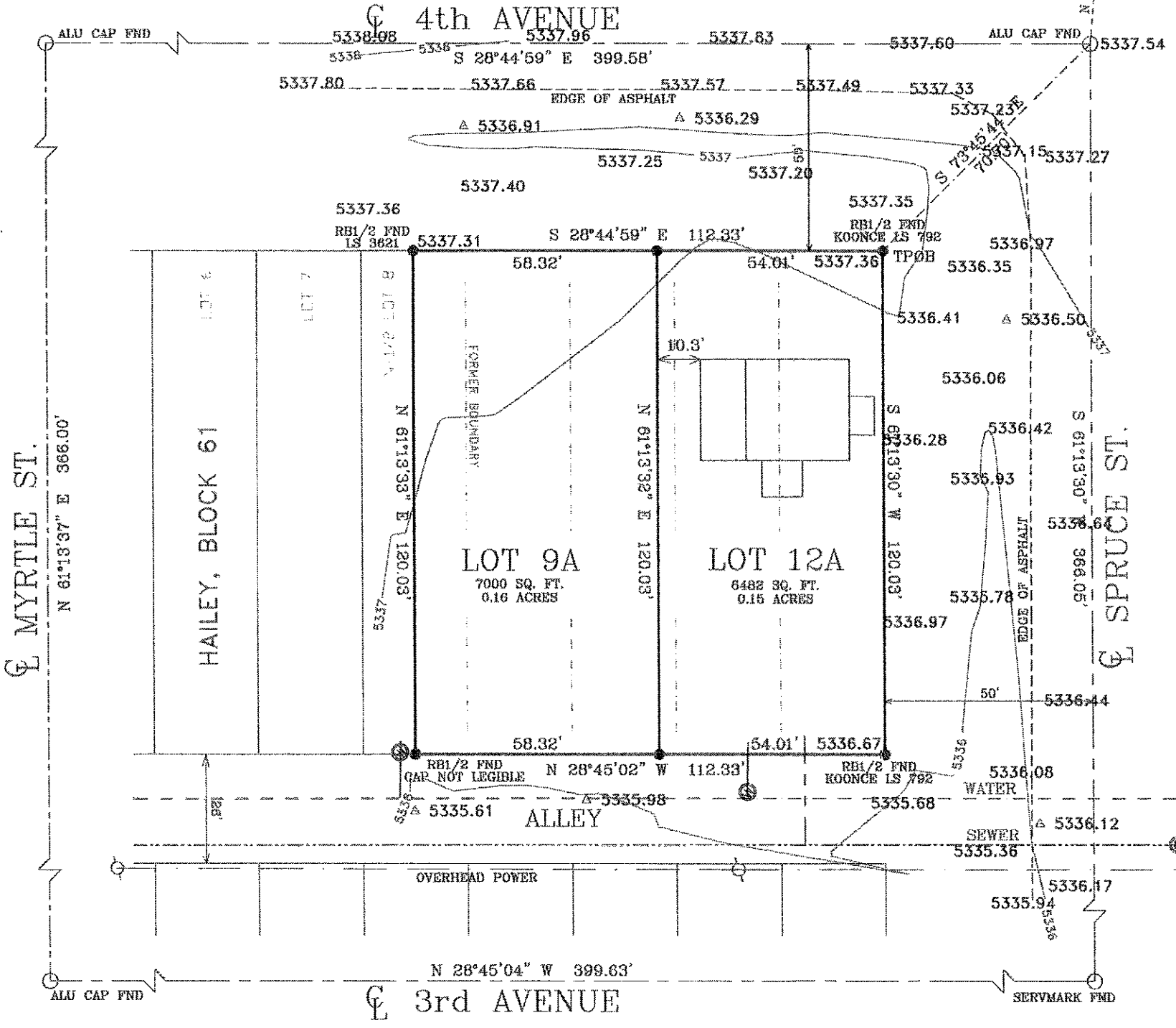
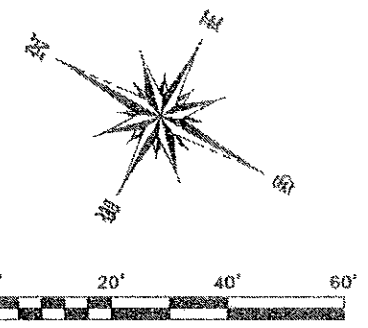
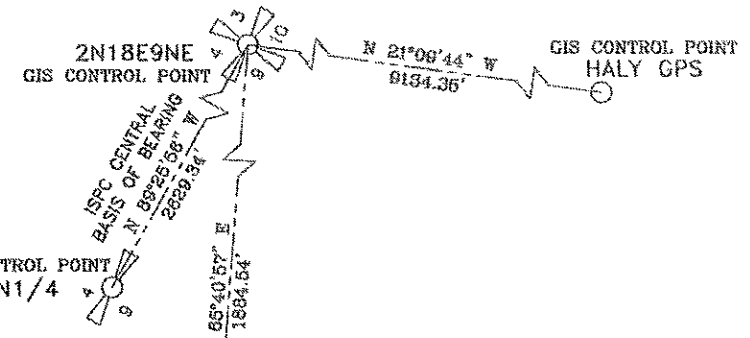


HAILEY, BLOCK 61, LOTS 9A & 12A

A REPLAT OF THE SOUTH 1/2 OF LOT 8 AND ALL OF LOTS 9, 10, 11 & 12
CREATING LOTS 9A AND 12A, BLOCK 61.
LOCATED WITHIN SECTION 9, T2N, R18E, B.M., HAILEY, BLAINE COUNTY, IDAHO



LEGEND

- CENTERLINE ROAD
- ADJOINING PROPERTY LINE
- EXTERIOR BOUNDARY LINES
- ⊙ SET 5/8" REBAR
- FOUND MONUMENT
- TP0B TRUE POINT OF BEGINNING
- BASIS OF BEARING = IDAHO STATE PLANE GRID.

HEALTH CERTIFICATE

Sanitary restrictions as required by Idaho Code Title 50, Section 13, have been satisfied. Sanitary restrictions may be reimposed, in accordance with Idaho Code Title 50, Chapter 13, Section 50-1326, by the issuance of a certificate of disapproval.

Date: _____ South Central District Health Dept., EHS

RECEIVED

JUL 16 2009



7/05/2009

PRELIMINARY ONLY PLOT FOR REVIEW

HAILEY, BLOCK 61, LOTS 9A & 12A
 A REPLAT OF THE SOUTH 1/2 OF LOT 8
 AND ALL OF LOTS 9, 10, 11 & 12
 SECTION 9, T2N, R18E, B.M., HAILEY, BLAINE COUNTY, IDAHO
 DATE: 7/05/2009 | BLCK 61 P1.dwg | SHEET 1 OF 2