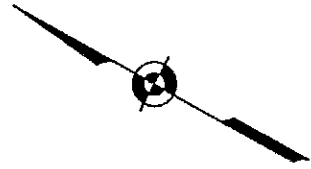
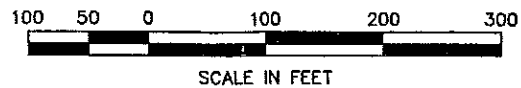


# A PRELIMINARY PLAT SHOWING WERTHEIMER PARK

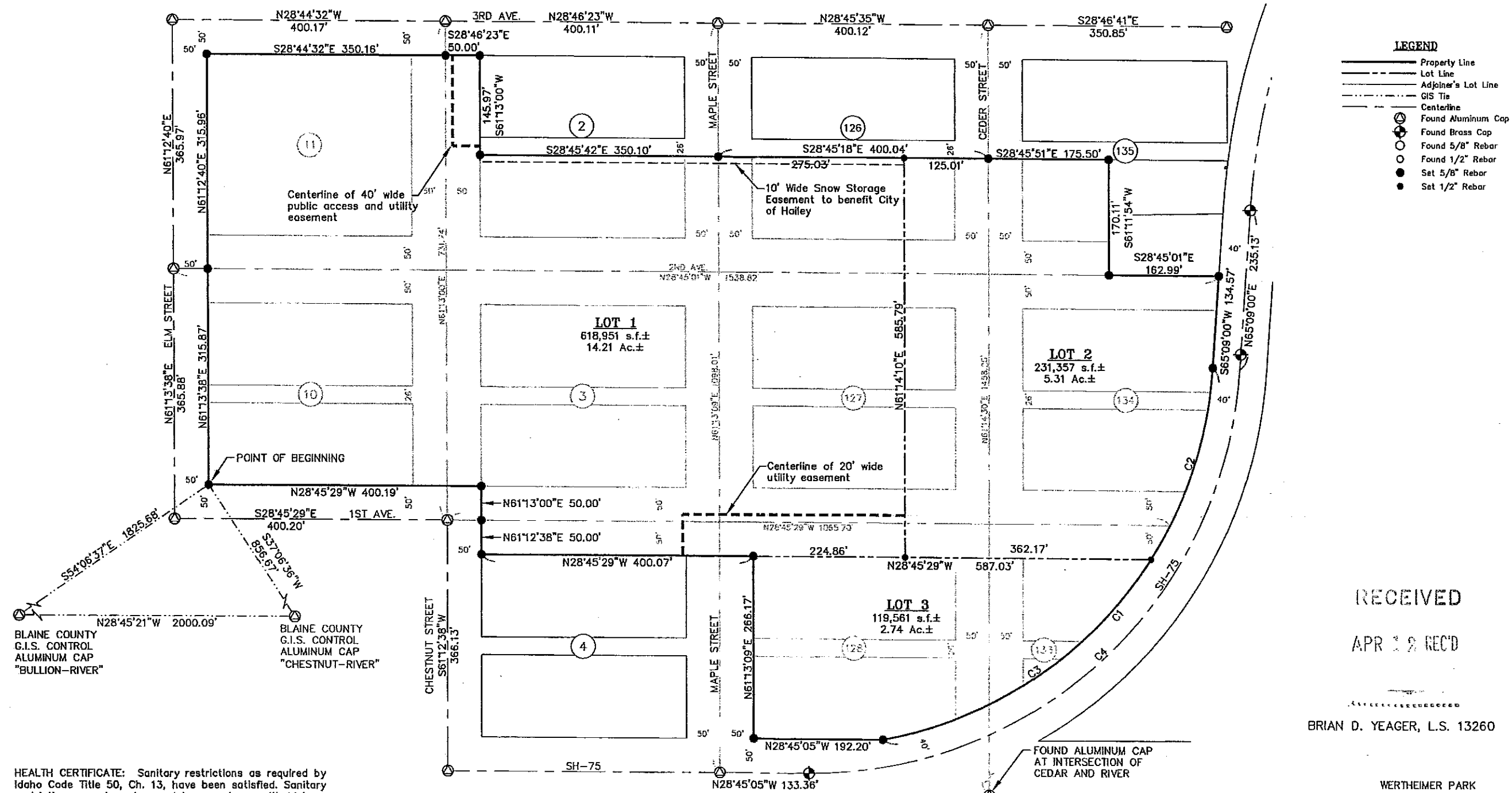
WHEREIN PORTIONS OF BLOCKS 2, 3, 10, 11, 126, 127, 128, 133, 134, & 135 OF THE HAILEY TOWNSITE ARE REPLATTED  
LOCATED WITHIN  
SECTIONS 9, 10, & 16, T.2 N., R.18 E., B.M., CITY OF HAILEY, BLAINE COUNTY, IDAHO  
MARCH 2010



SCALE: 1" = 100'



CURVE TABLE						
CURVE	LENGTH	RADIUS	TANGENT	DELTA	CHORD	CHORD DIRECTION
C1	788.98'	597.00'	464.09'	75°43'14"	732.80'	S 77°06'48" E
C2	299.27'	597.00'	152.85'	28°43'17"	296.14'	N 79°23'14" E
C3	489.71'	597.00'	259.58'	46°59'57"	476.10'	S 62°45'09" E
C4	958.74'	637.00'	596.46'	86°14'07"	870.78'	S 71°50'53" E



- LEGEND**
- Property Line
  - - - Lot Line
  - · - · - Adjoiner's Lot Line
  - · - · - GIS Tie
  - - - Centerline
  - ⊙ Found Aluminum Cap
  - ⊙ Found Brass Cap
  - Found 5/8" Rebar
  - Found 1/2" Rebar
  - Set 5/8" Rebar
  - Set 1/2" Rebar

BLAINE COUNTY G.I.S. CONTROL ALUMINUM CAP "BULLION-RIVER"  
BLAINE COUNTY G.I.S. CONTROL ALUMINUM CAP "CHESTNUT-RIVER"

HEALTH CERTIFICATE: Sanitary restrictions as required by Idaho Code Title 50, Ch. 13, have been satisfied. Sanitary restrictions may be reimposed in accordance with Idaho Code Title 50, Ch. 13, Sec. 50-1326, by issuance of a Certificate of Disapproval.

Date \_\_\_\_\_ South Central District Health Dept., EHS

RECEIVED  
APR 29 REC'D

BRIAN D. YEAGER, L.S. 13260

WERTHEIMER PARK  
GALENA ENGINEERING, INC.  
HAILEY, IDAHO  
SHEET 1 OF 2  
Job No. 5398.02